

043515

RECEIVED  
LARAMIE COUNTY  
CHEYENNE, WY.

CERTIFIED LAND CORNER RECORDATION

'88 MAY 5 PM 1 31

DESCRIPTION OF CORNER EVIDENCE FOUND, AND ORIGINAL RECORD (If known)

Found no evidence of previous monumentation.

T. 19N.  
S. 34 S. 35  
S. 3 S. 2  
T. 18N.  
R. 67W.  
6th P.M.

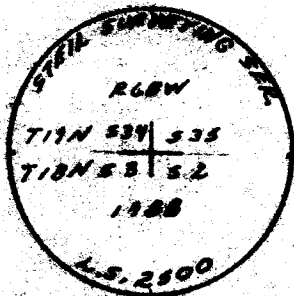
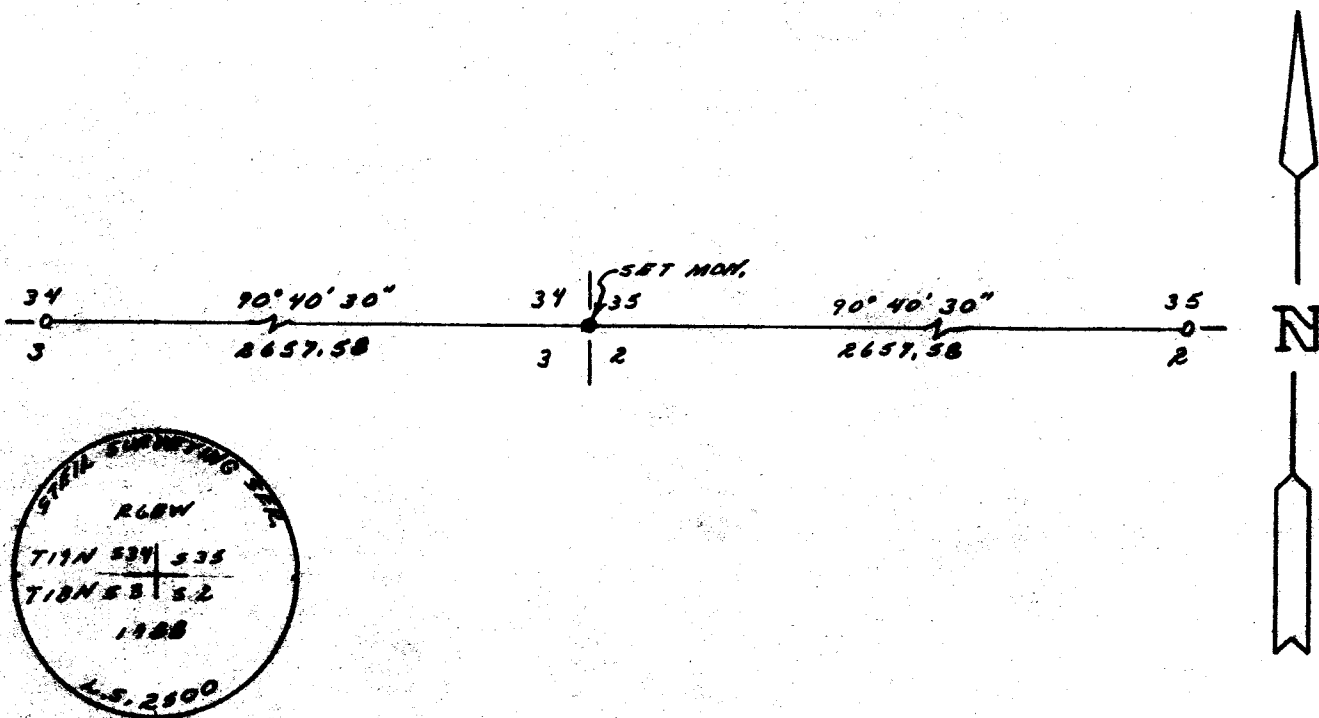
G.L.O. Record : Set sandstone 18"x10"x5".

DESCRIPTION OF MONUMENT AND ACCESSORIES ESTABLISHED TO PERPETUATE THE ORIGINAL LOCATION OF THIS CORNER:

At the Corner: Set 3"x30" long aluminum pipe /3 1/2" aluminum cap stamped as shown below and encircled by a collar of stone set at proportionate distance.

Accessories: See ties below.

SKETCH, WITH COURSE AND DISTANCE TO ADJACENT CORNER IF DETERMINED IN THIS SURVEY. (May Sketch or Paste Reproduction on Reverse Side.)



I, John A. Steil certify that I have carefully performed or reviewed the work done on the diagrammed corner as reported on this recordation form and approve the same.

*John A. Steil*  
Signature of Surveyor

L.S. 2500  
Registration No.

STATE OF WYOMING,  
Office of Clerk and Recorder,  
County of Laramie

This "corner record" was filed for record on the 5th day of May, 1988, was noted on the cross-index plat and is assigned page No. 3031, in book No. 1259

*Frank C. Whitaker*  
County Official

Cross Index No.	A-17	T. 18N	R. 67W	Mer. 6th
	Z-17	T. 19N	R. 67W	Mer. 6th
		T.	R.	Mer.
		T.	R.	Mer.
		T.	R.	Mer.
		T.	R.	Mer.
		T.	R.	Mer.